

Executive Summary

Executive Summary: MES (Manufacturing Execution System) vs. MOM (Manufacturing Operations Management)



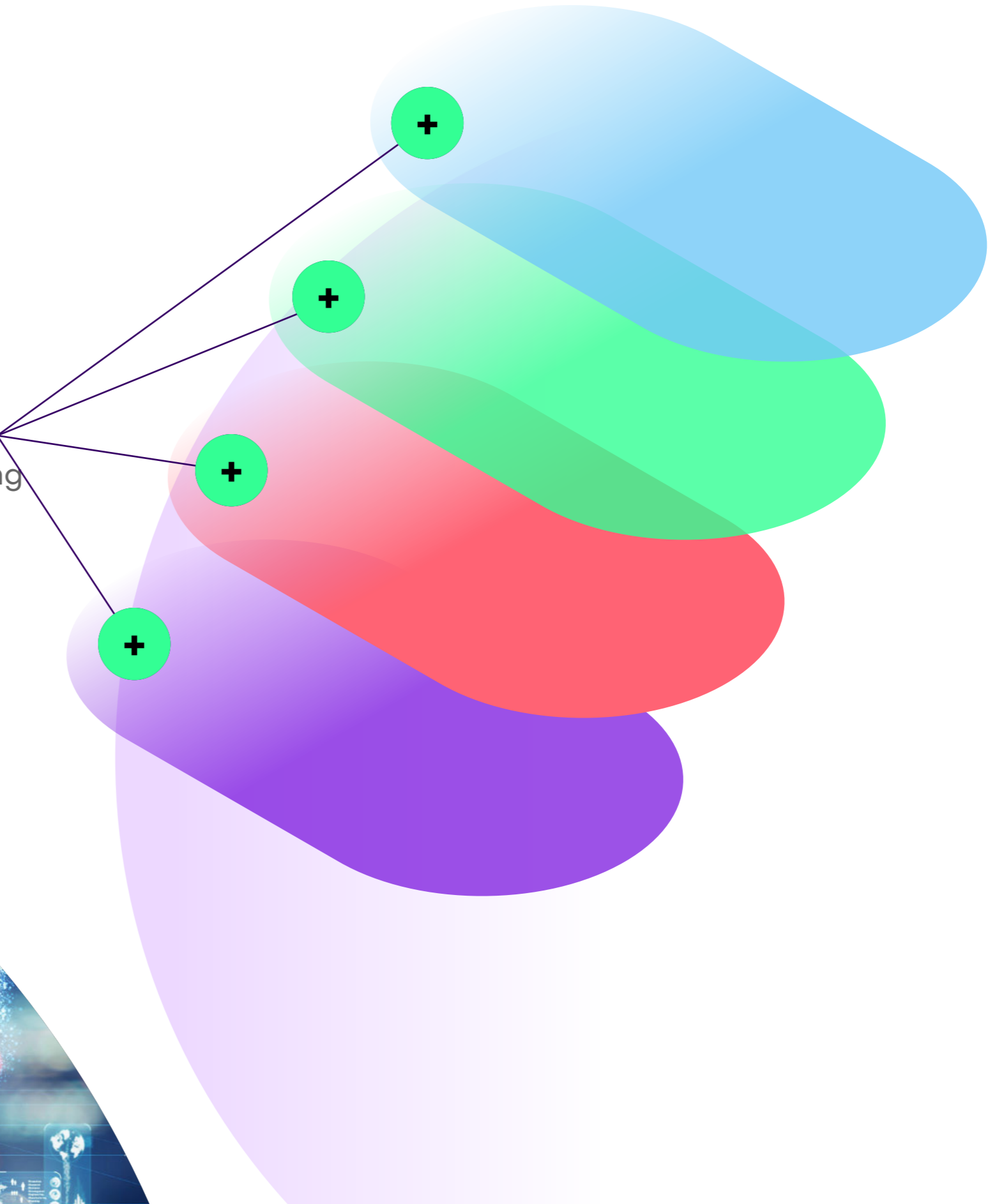


Manufacturing operations today demand efficiency, precision, and integration across various processes. Two critical systems in achieving these goals are the Manufacturing Execution System (MES) and Manufacturing Operations Management (MOM). This summary outlines their key benefits, differences, and how they complement each other.

MES (Manufacturing Execution System):

2. Optimized Production Operations:

Enables real-time monitoring and control of production processes, ensuring efficiency and quality.



MOM (Manufacturing Operations Management):

Broad Scope
and Integration



Comprehensive
Outlook



Overall
Management and
Optimization



Specific
Benefits



Provides a holistic view of the manufacturing process, enabling optimization across the entire value chain. It integrates data from multiple sources, providing a comprehensive overview of the manufacturing process. This holistic view allows for better decision-making and optimization across the entire value chain, ensuring that all aspects of the manufacturing process are considered and optimized. This holistic view allows for better decision-making and optimization across the entire value chain, ensuring that all aspects of the manufacturing process are considered and optimized.



Complementing Each Other:

Synergy: MES focuses on real-time execution, while MOM provides strategic oversight and optimization.

Enhanced Operational Clarity: Together, they ensure efficient production execution and strategic decision-making.

Example: MES captures machine data, while MOM analyzes it to optimize production schedules and resource allocation.

Importance and Relevance:

MES: Ensures efficient production execution, minimizes errors, reduces cycle times, and improves productivity.

MOM: Offers a holistic view, supports decision-making, and enhances competitiveness by optimizing processes.

Can You Have One Without the Other?



Interconnected: Technically, MOM includes MES, making them interconnected.



Scalability: Smaller manufacturers may leverage MES without significant investment, while larger enterprises benefit from implementing both for scalability and adaptability.

Theoretical Comparison:



With Only MES: Limited visibility beyond the shop floor and potential inefficiencies.



With MOM: Strategic decision-making, optimized resource allocation, and end-to-end traceability.





Comparison Table:

Element

Range



Data Source



Decision-Making Level



Scalability



Typical Use Cases



MES

Shop floor data, shop floor resource allocation

MOM

Supply chain management (procurement, logistics, etc.)

Learn more

About IFS

IFS develops and delivers cloud enterprise software for companies around the world who design, build, operate and maintain assets. Within our single platform, our industry specific products are innately connected to a single data model and use embedded digital innovation so that our customers can be their best when it really matters to their customers - at the Moment of Service™.

The industry expertise of our people and of our growing ecosystem, together with a commitment to deliver value at every single step, has made IFS a recognized leader and the most recommended supplier in our sector. Our team of more than 5,500 employees every day live our values of agility, trustworthiness, and collaboration in how we support our thousands of customers.

#MomentOfService

